

W8-Headstage

Pin Layout of the 8-Channel Headstage for the Wireless Recording System



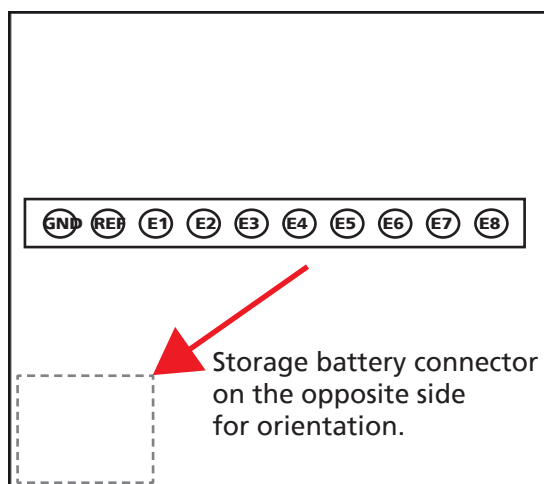
W8-Headstage bottom side:
Connector for the electrode probe
or the ME/W-Signal generator.



W8-Headstage top side:
The white connector is for the storage battery.
Please use this connector for the orientation
of the headstage.

W8-Headstage with single row socket

Diagram of the bottom side with pin layout.



Please orientate the headstage
as shown on the diagram.

Connector for W8-Headstage with single row socket

The connector mates with a standard
single row 1.27 mm pin connector such as:
preci-dip 850-10-010-10-001101

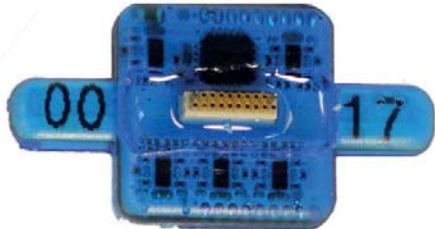
Pin Layout of the single row precision socket (1.27 mm, round pin).

Please orientate the headstage as shown on the diagram.

GND	Ground	MC_Rack
REF	Reference	
E1	Electrode 1	Channel 1
E2	Electrode 2	Channel 2
E3	Electrode 3	Channel 3
E4	Electrode 4	Channel 4
E5	Electrode 5	Channel 5
E6	Electrode 6	Channel 6
E7	Electrode 7	Channel 7
E8	Electrode 8	Channel 8

W8-Headstage

Pin Layout of the 8-Channel Headstage for the Wireless Recording System



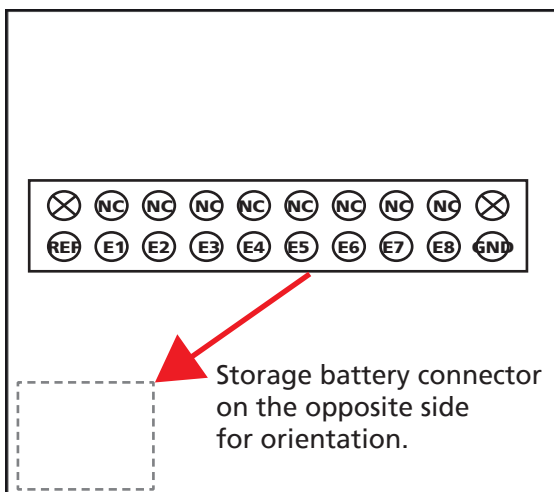
W8-Headstage bottom side:
Connector for the electrode probe or the ME/W-Signal generator via the adapter ADPT-Om-ME/W-SG.



W8-Headstage top side:
The white connector is for the storage battery. Please use this connector for the orientation of the headstage.

W8-Headstage with Omnetics socket

Diagram of the bottom side with pin layout.



Please orientate the headstage as shown on the diagram.

Connector for W8-Headstage with Omnetics socket

The Omnetics connector mates with standard pin connector such as:
Through-Hole:
A79038-001 (NPD-18-DD-GS)
Horizontal Surface Mount:
A79040-001 (NPD-18-AA-GS)
Vertical Surface Mount:
A79042-001 (NPD-18-VV-GS)
Cable (18.0" 34 AWG lead-wire):
A79044-001 (NPD-18-WD-18.0-C-GS)

Pin Layout of the Omnetics socket A79039-001.

Please orientate the headstage as shown on the diagram.

⊗	Guide post	REF	Reference	MC_Rack
NC	not connected	E1	Electrode 1	Channel 1
NC	not connected	E2	Electrode 2	Channel 2
NC	not connected	E3	Electrode 3	Channel 3
NC	not connected	E4	Electrode 4	Channel 4
NC	not connected	E5	Electrode 5	Channel 5
NC	not connected	E6	Electrode 6	Channel 6
NC	not connected	E7	Electrode 7	Channel 7
NC	not connected	E8	Electrode 8	Channel 8
⊗	Guide post	GND	Ground	

W8-Headstage

Technical Specifications

W8-Headstage (Omnetics or single row connector)

Number of channels	8
Dimensions (W x D x H) (w/o antennae)	16 x 16 x 5 mm
Weight (w/o battery)	2.9 g

Amplifier integrated in the Headstage

Bandwidth	1 Hz to 5 kHz (0.1 Hz on request)
Resolution	16 bit
Sampling rate	
8 channels simultaneously	20 kHz
4 channels simultaneously	40 kHz
2 channels simultaneously	40 kHz
Input voltage range	+ / - 12.4 mV
Distance for wireless link	5 m guaranteed

Batteries

Dimensions in mm

	Length	Width	Height	Weight in g
30 mAh battery	17	11	3	1.5
100 mAh battery	26	19.5	2.3	3.1
200 mAh battery	26	20	4.5	4.6
300 mAh battery	27.5	19.5	5	6.8

Recording Time of batteries in hours at maximal sampling rate on all eight channels

W8-HS

30 mAh battery	0.6
100 mAh battery	2
200 mAh battery	4
300 mAh battery	6.8