

multichannel*
systems

Multi Channel DataManger
Manual



Imprint

Information in this document is subject to change without notice. No part of this document may be reproduced or transmitted without the express written permission of Multi Channel Systems MCS GmbH.

While every precaution has been taken in the preparation of this document, the publisher and the author assume no responsibility for errors or omissions, or for damages resulting from the use of information contained in this document or from the use of programs and source code that may accompany it. In no event shall the publisher and the author be liable for any loss of profit or any other commercial damage caused or alleged to have been caused directly or indirectly by this document.

© 2017 Multi Channel Systems MCS GmbH. All rights reserved.

Printed: July 17

Multi Channel Systems MCS GmbH

Aspenhastraße 21
72770 Reutlingen
Germany

Fon +49-71 21-90 92 5 - 0
Fax +49-71 21-90 92 5 -11

info@multichannelsystems.com
www.multichannelsystems.com

Microsoft and Windows are registered trademarks of Microsoft Corporation. Products that are referred to in this document may be either trademarks and/or registered trademarks of their respective holders and should be noted as such. The publisher and the author make no claim to these trademark.

Table of Contents

1	Welcome to the Multi Channel DataManger	4
2	Before Your Start	4
2.1	<i>Terms of Use.....</i>	4
2.2	<i>Limitation of Liability.....</i>	4
2.3	<i>Important Safety Advice.....</i>	4
3	Installation and Updates.....	5
3.1	<i>Recommended Operating System Settings</i>	5
3.2	<i>32 bit and 64 bit Version</i>	5
4	General Software Features	6
4.1	<i>Description and Purpose.....</i>	6
4.2	<i>In- and Output Directory</i>	6
4.3	<i>Main Menu.....</i>	6
5	Converting Data Files.....	8
5.1	<i>Compatible Input Data</i>	8
5.2	<i>Output File Formats.....</i>	9
5.3	<i>Selecting Files to Convert</i>	9
5.4	<i>Exporting Only Selected Data Streams</i>	10
5.5	<i>Example: Batch-Convert Only Time Stamps from Two Files to NEX format</i>	10
6	Support and Troubleshooting	11
7	Contact Information	11

1 Welcome to the Multi Channel DataManger

The Multi Channel DataManger is the data conversion software of the Multi Channel Suite package. The Multi Channel Experimenter is for online data acquisition, and the Multi Channel Analyzer is for offline data analysis. The Multi Channel VideoControl is the video acquisition software of the Multi Channel Suite package. Please read the following chapters to understand the general concept of the Multi Channel Suite before starting.

2 Before Your Start

2.1 Terms of Use

You are free to use the Multi Channel DataManger for its intended purpose. You agree that you will not decompile, reverse engineer, or otherwise attempt to discover the source code of the software.

2.2 Limitation of Liability

Multi Channel Systems MCS GmbH makes no guarantee as to the accuracy of any and all tests and data generated by the use the Multi Channel DataManger software. It is up to the user to use good laboratory practice to establish the validity of his findings. To the maximum extent permitted by applicable law, in no event shall Multi Channel Systems MCS GmbH or its suppliers be liable for any special, incidental, indirect, or consequential damages whatsoever (including, without limitation, injuries, damages for data loss, loss of business profits, business interruption, loss of business information, or any other pecuniary loss) arising out of the use of or inability to use Multi Channel DataManger or the provision of or failure to provide Support Services, even if Multi Channel Systems MCS GmbH has been advised of the possibility of such damages.

2.3 Important Safety Advice



Warning: Make sure to read the following advices prior to install or to use Multi Channel DataManger. If you do not fulfil all requirements stated below, this may lead to malfunctions or breakage of connected hardware, or even fatal injuries. Obey always the rules of local regulations and laws. Only qualified personnel should be allowed to perform laboratory work. Work according to good laboratory practice to obtain best results and to minimize risks. Make always sure to validate your findings. Prepare backup copies on a regular basis to avoid data loss.

The operator is obliged to ensure that Multi Channel DataManger is only be used for its intended purpose and that it is only used by qualified personnel.

Important: Multi Channel DataManger software is developed for Multi Channel Systems MCS devices. MCS devices are not intended for medical uses and must not be used on humans, especially not for uses that could impair health.

3 Installation and Updates

One of the following Microsoft Windows® operating systems is required: Windows 10, 8.1 or Windows 7, 64 bit (English and German versions supported) with the NT file system (NTFS). Other language versions may lead to software errors. If a computer was acquired from MCS, the Multi Channel Suite will be preinstalled. Updates are available for free download on a regular basis from the [MCS web site](#). It is recommended always to install the latest software version. To install the software download and start the respective *.exe file and follow the instructions on the screen.

3.1 Recommended Operating System Settings

The following automatic services of the Windows operating system interfere with the data storage on the hard disk and can lead to severe performance limits in Multi Channel DataManager. These routines were designed for use on office computers, but are not very useful for a data acquisition computer.

- Turn off Screen Saver
- Turn off Windows Indexing Service. Only important for data hard drive
- Manual management of automatic Windows Update
- Power Options: Power scheme: Never turn off monitor, hard disk and system standby

It is also not recommended to run any applications in the background when using Multi Channel DataManager. Remove all applications from the Autostart folder. Be careful when using a Virus Scanner. If possible, exclude Multi Channel Suite data files (*.msrd) from being scanned.

3.2 32 bit and 64 bit Version

Currently, the Multi Channel DataManager is available in a 32 bit and a 64 bit version. The 64 bit version can operate with larger files, while the 32 bit version is limited by the restrictions of the Windows operating system to files up to approximately 1.2 GB. However, the 64 bit version cannot export to Spike 2 format (*.smr), due to restrictions of the *.smr file format. Unless large files must be converted, the 32 bit version would be the better version to install, as it offers the full range of conversion options.

4 General Software Features

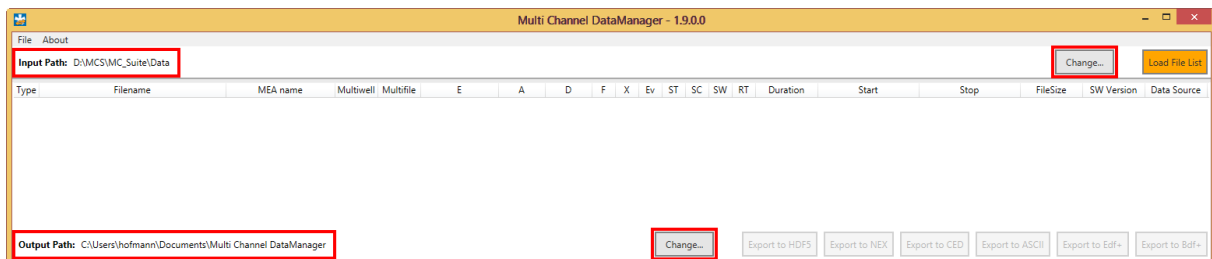
The [Multi Channel Suite](#) consists of four parts: The **Multi Channel Experimenter** for online data acquisition, the **Multi Channel Analyzer** for offline data analysis, the **Multi Channel DataManager** for data conversion, and the **Multi Channel VideoControl** for controlling a video camera. Many features and concepts apply to all parts.

4.1 Description and Purpose

The Multi Channel DataManager is a data conversion tool. The software is **free to download** and install on an unlimited number of computers. It can convert data files from most MCS data acquisition software to a number of different 3rd party output formats. Batch conversion of a number of files is possible, as well as exporting just selected data streams from one or more files. There are no import options for 3rd party data files.

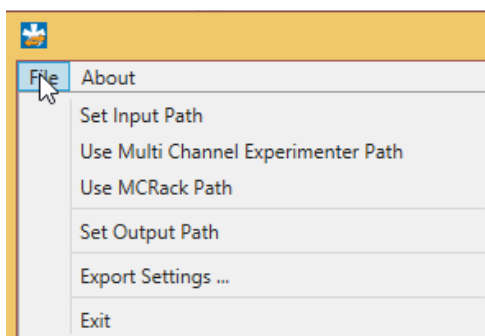
4.2 In- and Output Directory

The Multi Channel DataManager uses default folders for input data files and for storing the exported data files. Both directories can be changed by the user. The Input Path is displayed on the top, and the Output Path at the bottom of the software window.

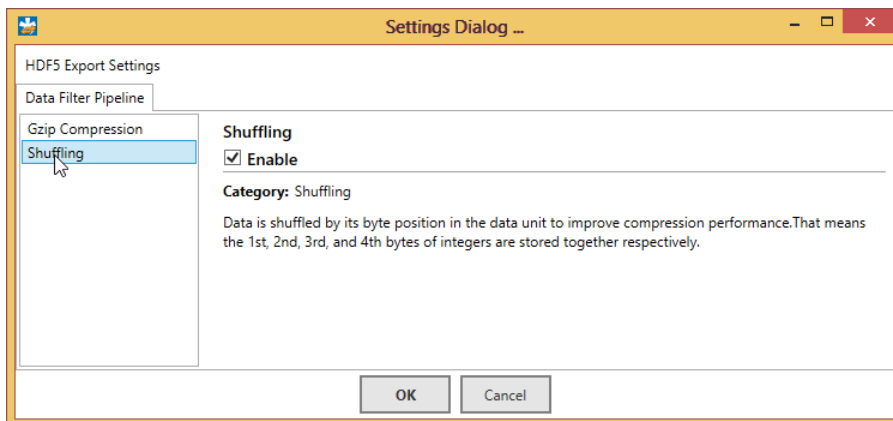
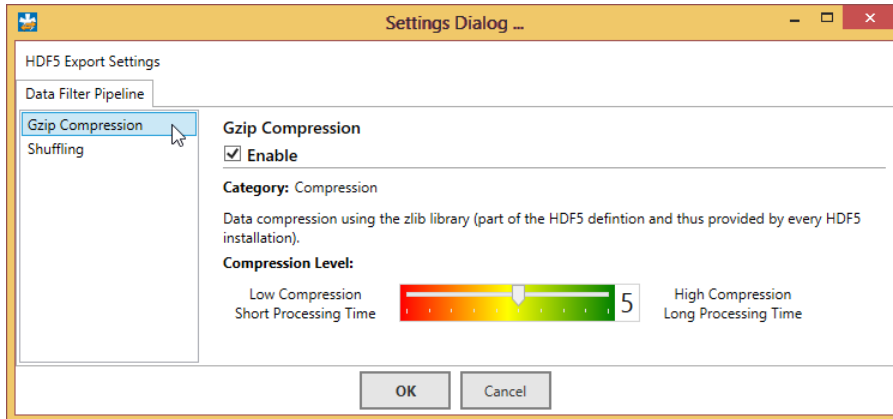


4.3 Main Menu

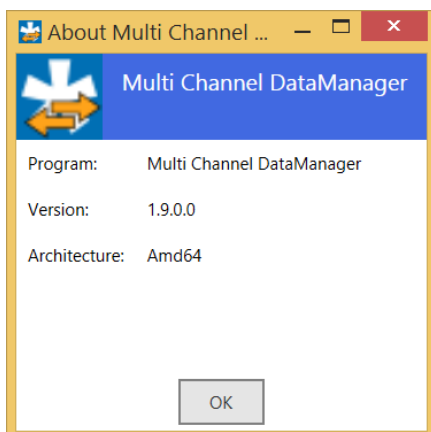
In the File menu, there is the option to set the **input and output directories** from a file browser. The input directory can also be set automatically to the default data path used in Multi Channel Experimenter or MC_Rack software.



The **Export Settings** apply to **HDF5 export only**. Two options to compress the data during HDF5 export are available, Gzip and Shuffling. For Gzip, the compression level can be changed. A high compression level will increase the time for exporting the data, but will decrease the size of the resulting files.

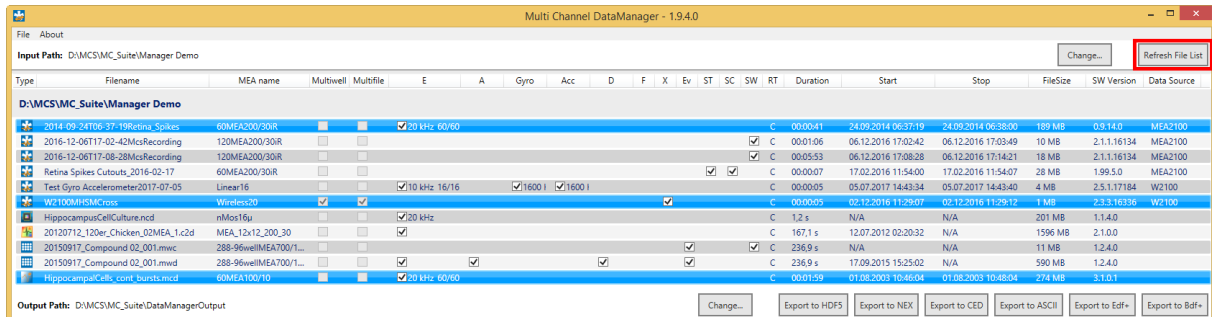


The **About** dialog will show the installed **software version**, and whether the 64 bit or 32 bit option is in use. **Architecture** X68 means 32 bit, X64 means 64 bit.



5 Converting Data Files

The Multi Channel DataManager will open with an empty window when started. Use the **Load File List** command to load the list with all compatible files in the selected Input folder. If new files are moved to the Input folder, the list can be **refreshed**. For each file, all available meta information is shown.



Type	Software used for recording
File name	
MEA name	MEA layout, Wireless HS type, CMOS type
Multiwell / Multifile	Multiple files were generated in this recording (multiple wells / MEA or multiple headstages in Multi Headstage Mode)
Data streams	E Electrode Raw Data, A Analog Raw Data, Gyro Rotation Data, Acc Acceleration Data, D Digital Data, F Filtered Data, X Cross Channel Data, Ev Events, ST Spike Time Stamps, SC Spike Cutouts, SW Sweeps; streams present in the file are marked with a tick box
RT	Recording type
Duration	Length of the recording
Start / Stop	Date and time of beginning and end of the recording
File size	File size in MB
SW Version	Version of the data acquisition software which was used during recording
Data source	Data acquisition hardware which was used for recording

5.1 Compatible Input Data

The Multi Channel DataManager can convert data generated with the Multi Channel Experimenter (*.msrd), MC_Rack (*.mcd), CMOS MEA Control (*.ncd), Multiwell Screen (*.mwd) and with some restrictions Cardio 2D (*.c2d). It is not possible to convert these formats from one to the other, just any of those input formats to the output formats described below.

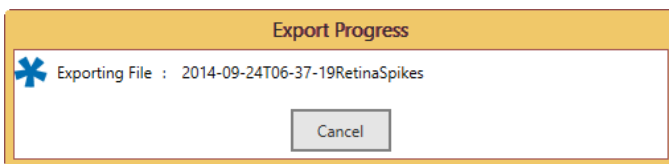
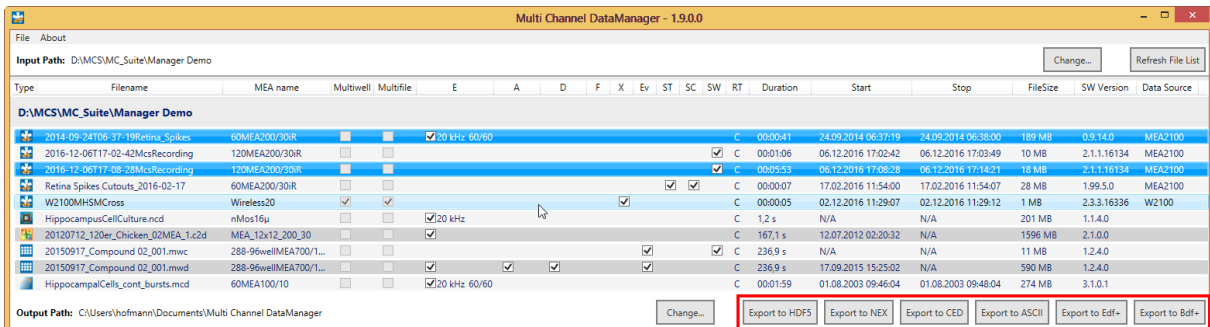
5.2 Output File Formats

The following output formats are available. For requests concerning other formats, please contact Support@multichannelsystems.com. Generated output files will have the **same file name** as the original input file, with the respective new file ending.

Export to ...	File type	Description
HDF5	*.h5	A format native to Matlab and Python
NEX	*.nex	Native file format of NeuroExplorer
CED	*.smr	Native file format of Spike 2 from CED
ASCII	*.csv	General purpose binary file format
EDF+ BDF+	*.edf *.bdf	European Data Format , often used in EEG recordings and sleep research; BDF is the 24 bit version of EDF

5.3 Selecting Files to Convert

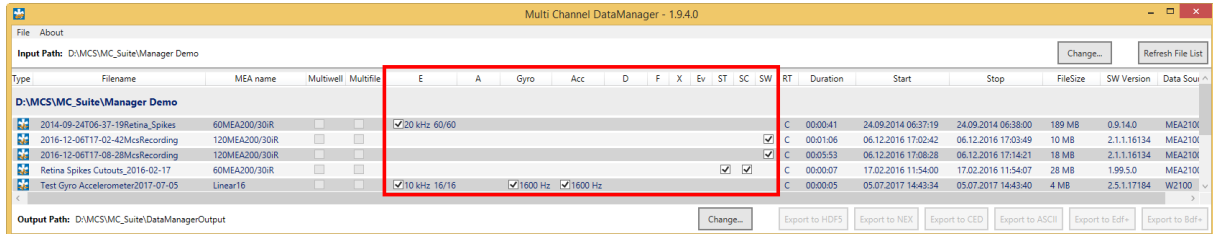
To select a file for conversion, simply highlight it on the list. For **batch conversion** of several files, you can mark them as in any Windows file explorer with Shift+Click or CTRL+Click. Then select the output format and click the corresponding button. A dialog will come up while conversion is in progress, and after it is completed.



If incompatibilities between the input file(s) and the selected output format occur, an **error message** will appear.

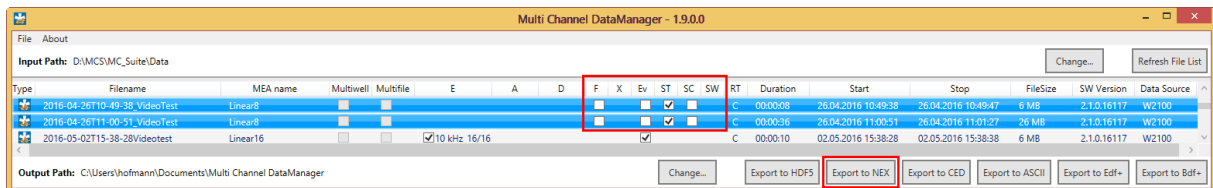
5.4 Exporting Only Selected Data Streams

Each file may contain several different data streams, like Raw Data, Filtered Data, Spike Cutouts and so on (see chapter 5, Converting Data Files). Each of those streams can be selected or deselected for conversion with a tick box.



5.5 Example: Batch-Convert Only Time Stamps from Two Files to NEX format

Open the Multi Channel DataManager and load the file list. Highlight the two files with Shift Click and deselect all streams other than the Spike Time Stamps (ST). Click the **Export to NEX** button. Two files will be generated, with the same file name as the original input files, and the ending *.nex.



6 Support and Troubleshooting

The Multi Channel Suite is a software under development, so bugs may occur more frequently than usual. Also, new software versions are released in short intervals. The software development team of Multi Channel Systems is very grateful for all reported bugs. Due to the modular nature of the software, it is impossible to test all possible configurations for each new release, and any customer feedback is much appreciated to find all problems.

Please report all bugs, feature requests or other issues to Support@multichannelsystems.com. We can only fix things we know about.

In case of problems, please check first whether your **software version** is up to date. The latest release can always be found in the [Downloads](#) section of the MCS web site. Maybe the problem has already been solved. If not, reboot the software and power cycle the recording device.

If the problem persists, report it together with the **input data file** and the resulting **exported file** (if applicable). An upload option for the files will be provided if need be.

7 Contact Information

Local retailer

Please see the list of official [MCS distributors](#) on the MCS web site.

User forum

The Multi Channel Systems MCS GmbH [user forum](#) provides the opportunity for you to exchange your experience or thoughts with other users worldwide.

Mailing list

If you have subscribed to the [newsletter](#), you will be automatically informed about new software releases, upcoming events, and other news on the product line. You can subscribe to the newsletter on the contact form of the MCS web site.

www.multichannelsystems.com