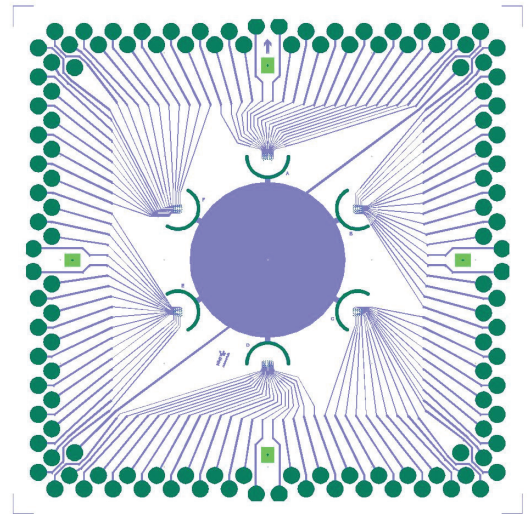


120-6wellMEA200/30iR-ITO

For use with the MEA2100-(Mini)-120-System

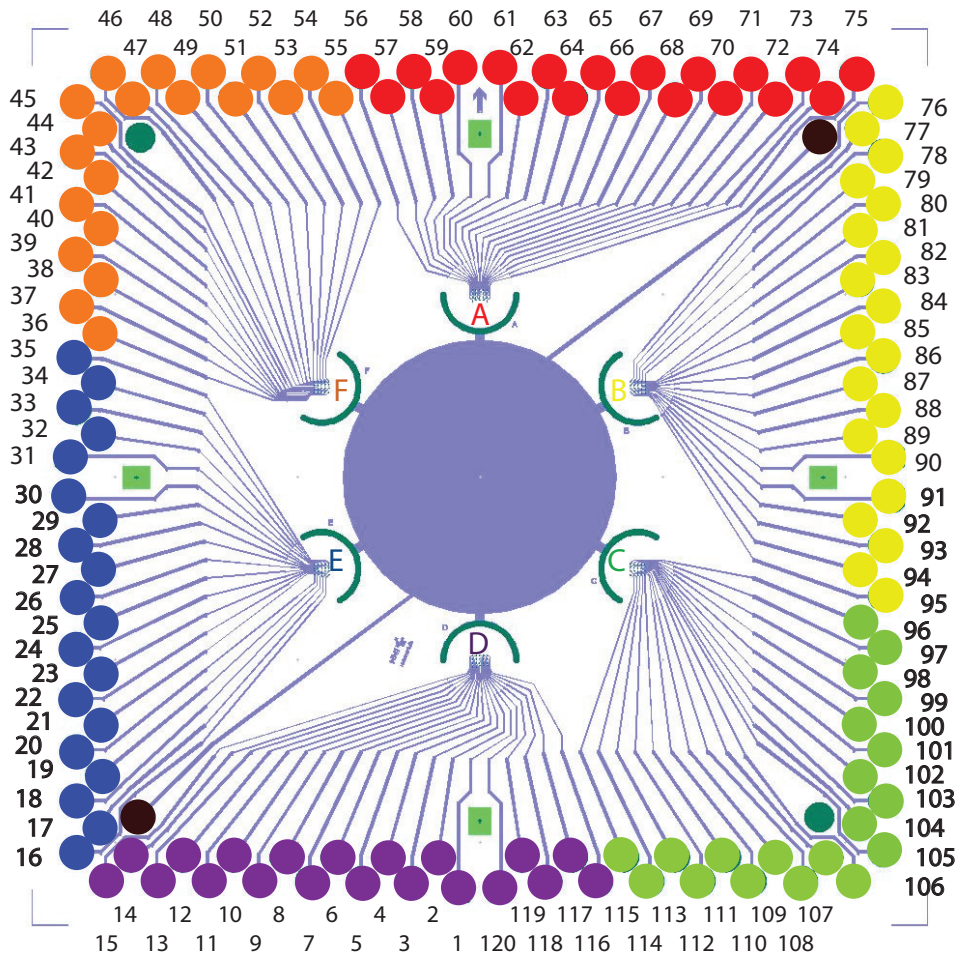


Technical Specifications

Temperature compatibility	0 - 125 °C
Dimensions (W x D x H)	49 mm x 49 mm x 1 mm
Base material	Glass
Track material	ITO (Indium Tin Oxide)
Contact pads	ITO (Indium Tin Oxide)
Electrode diameter	30 µm
Interelectrode distance (center to center)	200 µm
Electrode height	Planar
Electrode material	TiN (Titanium Nitride)
Isolation material	Silicon nitride 500 nm (PEVCD)
Electrode impedance	< 100 kΩ
Electrode layout grid	5 x 4 or 4 x 5 electrodes
Number of recording electrodes	120 (20 electrodes per well)
Number of reference electrodes	2 additional internal reference electrodes (iR)
Software	
Multi Channel Experimenter	MEA Configuration
MC_Rack	Configuration
6 Well MEA Perfusion Chamber	
Triangle chamber ring with 6 wells (tcr)	OD 30 mm, ID 27 mm, height 10 mm of each well. Volumetric capacity of each well: Approximate 700 µl.
Round chamber ring with 6 wells (rcr)	OD 30 mm, ID of the wells 8 mm, height 10 mm of each well. Volumetric capacity of each well: Approximate 500 µl.



120-6wellMEA200/30iR Layout



Numbering

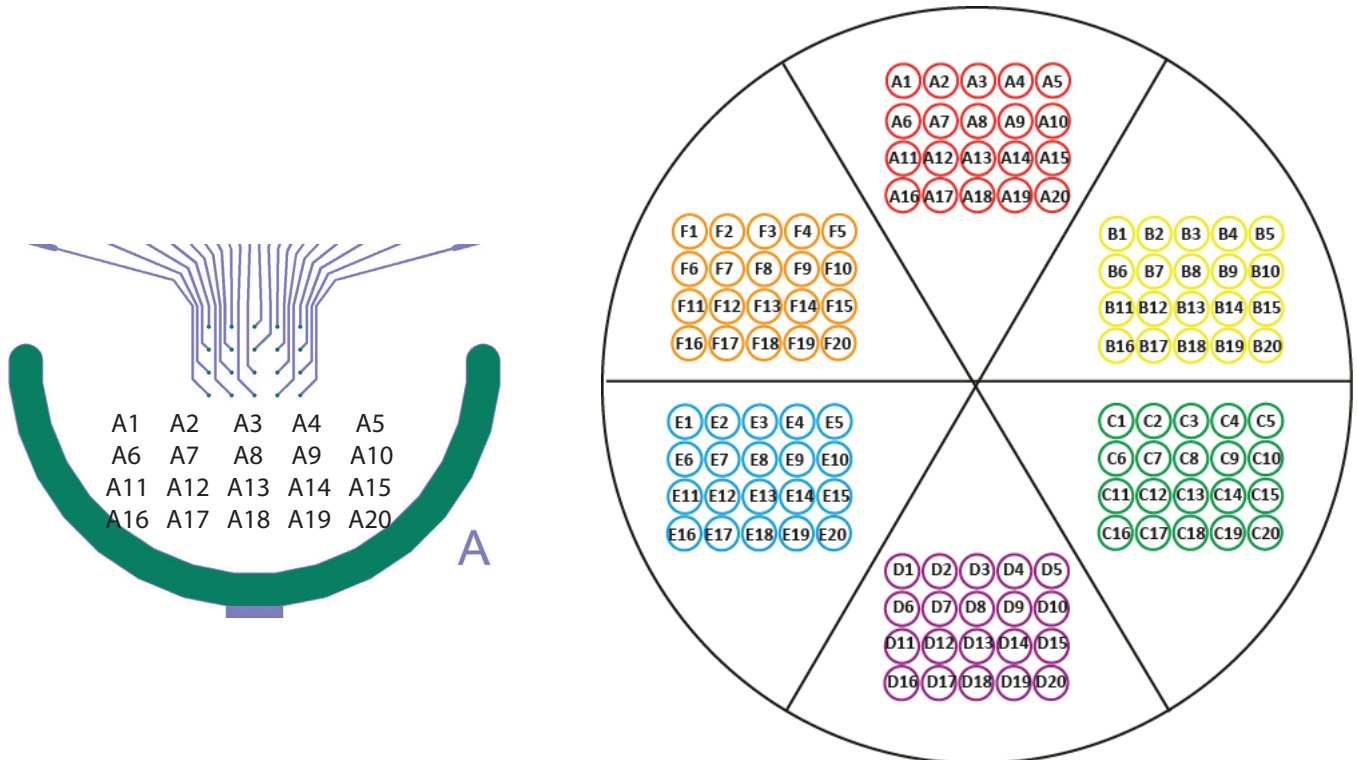
The letter-digit code is the electrode identifier and refers to the position of the electrode in the 60-6wellMEA. The digit codes are the amplifier pin numbers. Please make sure to select in the data acquisition program MC_Rack in "Data Source Setup", "Source layout", "Configuration" and the channel map "6 Well MEA".

Sterilization and Handling

The same material is used for standard MEAs and 120MEAs. Therefore, they are equally robust and heat-stabilized. They can be autoclaved and coated with different procedures for cell and tissue cultures.

For use with the MEA2100-120-System. [Learn more.](#)

Important: Please insert the 120-6wellMEA into the amplifier with the well A up, viewed from the front, with the articulation of the MEA2100-120 headstage in the back.



MEA2100-120-System amplifier pin numbers (digit) and correspondent electrodes ID in the wells:

	A	B	C	D	E	F
1	56 (A16)	76 (B1)	96 (C1)	116 (D5)	16 (E20)	36 (F20)
2	57 (A11)	77 (B2)	97 (C2)	117 (D10)	17 (E19)	37 (F19)
3	58 (A6)	78 (B3)	98 (C3)	118 (D15)	18 (E18)	38 (F18)
4	59 (A1)	79 (B4)	99 (C4)	119 (D20)	19 (E17)	39 (F17)
5	60 (A17)	80 (B5)	100 (C5)	120 (D4)	20 (E16)	40 (F16)
6	61 (A12)	81 (B6)	101 (C6)	1 (D9)	21 (E15)	41 (F15)
7	62 (A7)	82 (B7)	102 (C7)	2 (D14)	22 (E14)	42 (F14)
8	63 (A2)	83 (B8)	103 (C8)	3 (D19)	23 (E13)	43 (F13)
9	64 (A18)	84 (B10)	104 (C10)	4 (D3)	24 (E11)	44 (F11)
10	65 (A13)	85 (B9)	105 (C9)	5 (D8)	25 (E12)	45 (F12)
11	66 (A3)	86 (B14)	106 (C14)	6 (D18)	26 (E7)	46 (F7)
12	67 (A8)	87 (B15)	107 (C15)	7 (D13)	27 (E6)	47 (F6)
13	68 (A4)	88 (B13)	108 (C13)	8 (D17)	28 (E8)	48 (F8)
14	69 (A9)	89 (B12)	109 (C12)	9 (D12)	29 (E9)	49 (F9)
15	70 (A14)	90 (B11)	110 (C11)	10 (D7)	30 (E10)	50 (F10)
16	71 (A19)	91 (B20)	111 (C20)	11 (D2)	31 (E1)	51 (F1)
17	72 (A5)	92 (B19)	112 (C19)	12 (D16)	32 (E2)	52 (F2)
18	73 (A10)	93 (B18)	113 (C18)	13 (D11)	33 (E3)	53 (F3)
19	74 (A15)	94 (B17)	114 (C17)	14 (D6)	34 (E4)	54 (F4)
20	75 (A20)	95 (B16)	115 (C16)	15 (D1)	35 (E5)	55 (F5)