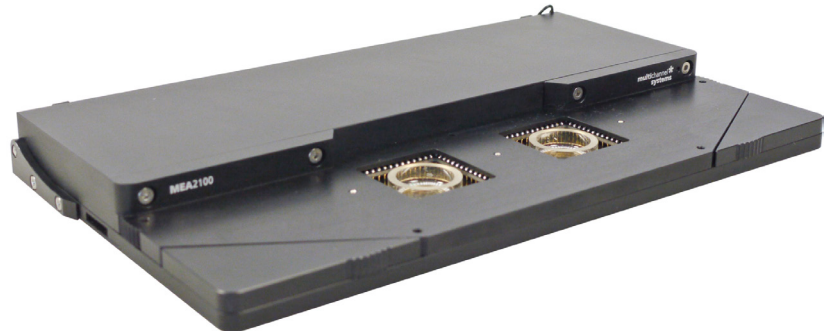


MEA2100-HS2x60

for Use with MCS Interface Board 3.0 Multiboot

Technical Specifications



Technical Specifications

Operating temperature
Dimensions (W x D x H)
Type of cable to interface board

0 - 50 °C
250 mm x 151 mm x 25 mm
eSATAp

Integrated Amplifier

Number of recording channels
Signal input voltage range
Bandwidth
Data resolution
Sampling frequency per channel
Input impedance

120
± 500 mV
DC to 10 kHz
24 bit (16 bit, if operated with MC_Rack)
up to 50 kHz, software controlled
1 GΩ || 18 pF

Integrated Stimulus Generator

Number of stimulation channels
Stimulation pattern

3 independent stimulation channels per 60 electrodes
MC_Rack: rectangle biphasic, monophasic, pulse trains
Multi Channel Experimenter: almost arbitrary patterns

Output voltage
Output current
Time resolution

± 12 V
± 1.5 mA @ ± 16 V compliance voltage
20 μs

Integrated Heating Element

Temperature sensor type
Accuracy

Pt 100 (with four wire connection, compatible with TCX)
± 0.1 °C

