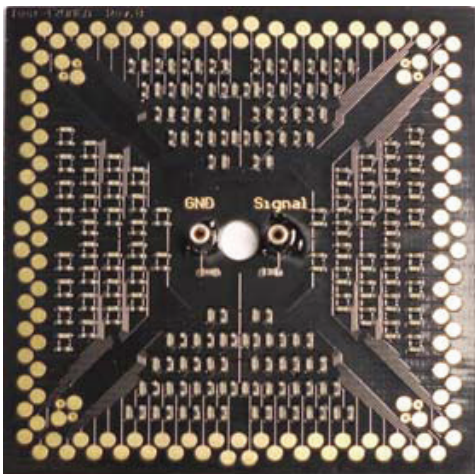


Test-120MEA

Test Model Probe for MEA2100-HS120

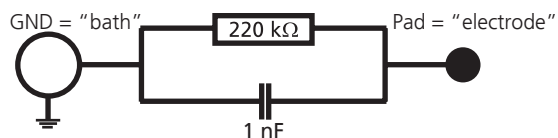


Scope of delivery:

- 1 Test Model Probe Test-120MEA
- 1 CB-GND cable (CB-GND cable with a length of ca. 50 mm and 0.76 mm connectors at each end.)

Please insert the Test-120MEA in correct orientation into the MEA2100-HS120 headstage: "GND" and "Signal" should be readable when looking to the front of the opened headstage.

For the intention to check the noise level of a MEA120-System without external signals, please connect "Signal" and "GND" sockets with a CB-GND cable for a short circuit. The impedance between signal source and contact pads averages 120 kΩ at 1 kHz.



The provided test model probe simulates a 120MEA with a resistor of 220 kΩ and a 1 nF capacitor between ground and each of the electrodes. It can be used for testing the noise level of the electrodes of a MEA2100-HS120 for all 120 recording electrodes simultaneously.

Important

To feed in test signals into the MEA2100-HS120-System via the test model probe, please connect the signal source, for example a STG, to the "Signal" input socket. Connect the GND connector to the signal source ground.

The signal input of the test model probe is a 1:1000 voltage divider!



Warning: The device may only be used together with the MEA2100-120-System from Multi Channel Systems MCS GmbH, and only for the specified purpose. Damage of the device and even fatal injuries can result from improper use.