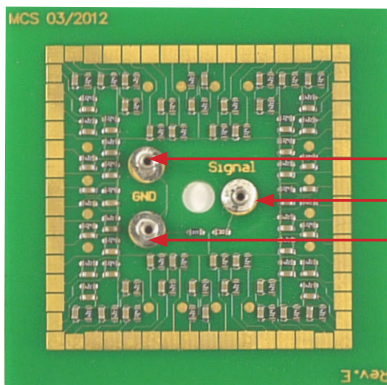


Test-60MEA

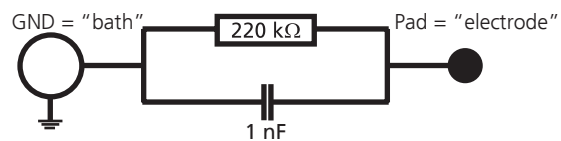
Test Model Probe for MEA2100-HS60 / HS2x60 and MEA1060 Amplifiers



Signal
GND
Signal Source
Signal Ground

Scope of delivery:

- 1 Test Model Probe Test-60MEA
- 2 CB-GND cables (CB-GND cable with a length of ca. 50 mm and 0.76 mm connectors at each end).



For the intention to check the noise level of a MEA-System without external signals, please connect "Signal Source" and "Signal Ground" sockets for a short circuit. The second ground pin must be connected to the amplifiers ground.

For ground connection and for short circuit please use the provided cable CB-GND. The impedance between signal source and contact pads averages 120 kΩ at 1 kHz.

The provided test model probe simulates a MEA with a resistor of 220 kΩ and a 1 nF capacitor between ground and electrode for each of the 60 electrodes. It can be used for testing the noise level of the electrodes of a MEA2100-HS60 / HS2x60 headstage and for MEA1060 amplifier.

Important

To feed in test signals into the MEA amplifier via test model probe, it is mandatory to connect the signal source, for example a STG, to the input socket labeled with "Signal".

The signal input of the test model probe is a 1:1000 voltage divider!

Connect any of the GND pins to the amplifiers ground and the other one to the signal ground. Both pins are internal connected.



Warning: The device may only be used together with the MEA-System from Multi Channel Systems MCS GmbH, and only for the specified purpose. Damage of the device and even fatal injuries can result from improper use.